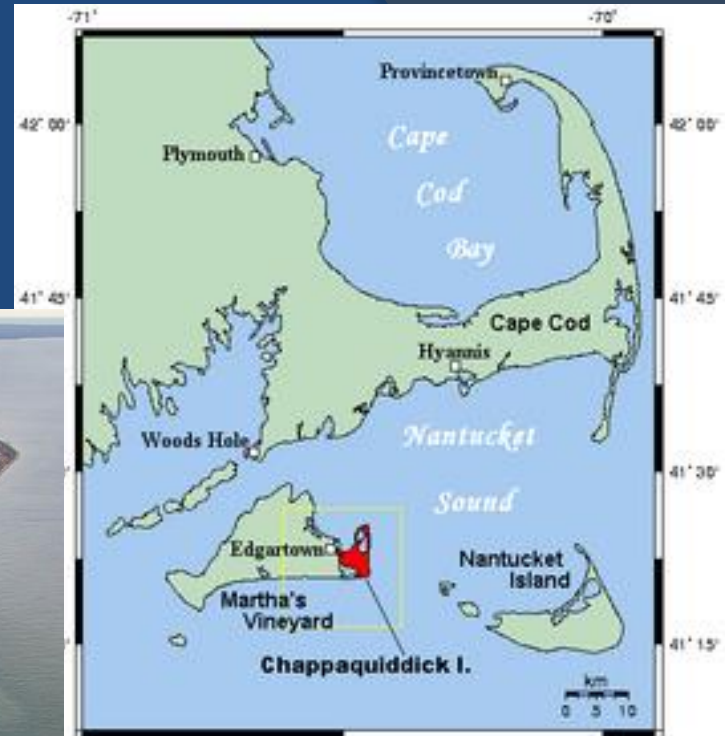


HOUSE VS. NATURE

LIFE ON CHAPPAQUIDICK ISLAND

The Schifter House Move



Schifter House Move

- ⦿ House sits at the very tip of Wasque Point
- ⦿ House built in 2007, 300' from edge of bluff
- ⦿ Hurricane Sandy removed 50' of frontage
- ⦿ Losing about 1' per week after





Schifter House Move

- Can NOT build on a new foundation
- Pick up and move an 8800 sf house, plus 3 additional structures



Schifter House Move

- ⦿ Required the construction of a heavy haul rd.

50' Deep x 200' Wide x 450' Long

- ⦿ Excavation created a 170' tall berm made up of highly erosive sand





Schifter House Move

- Berm built in 10' lifts with Geogrid placed between the lifts
- NAG C125BN Rolled Erosion Control Blanket installed on the face of slopes
- 2 rows of 24" Coir Logs were installed for perimeter control
- Project took 7 months to complete









\$19.5 Million